

Ernest Lawson
Compiled by Diane Wolford Sheppard

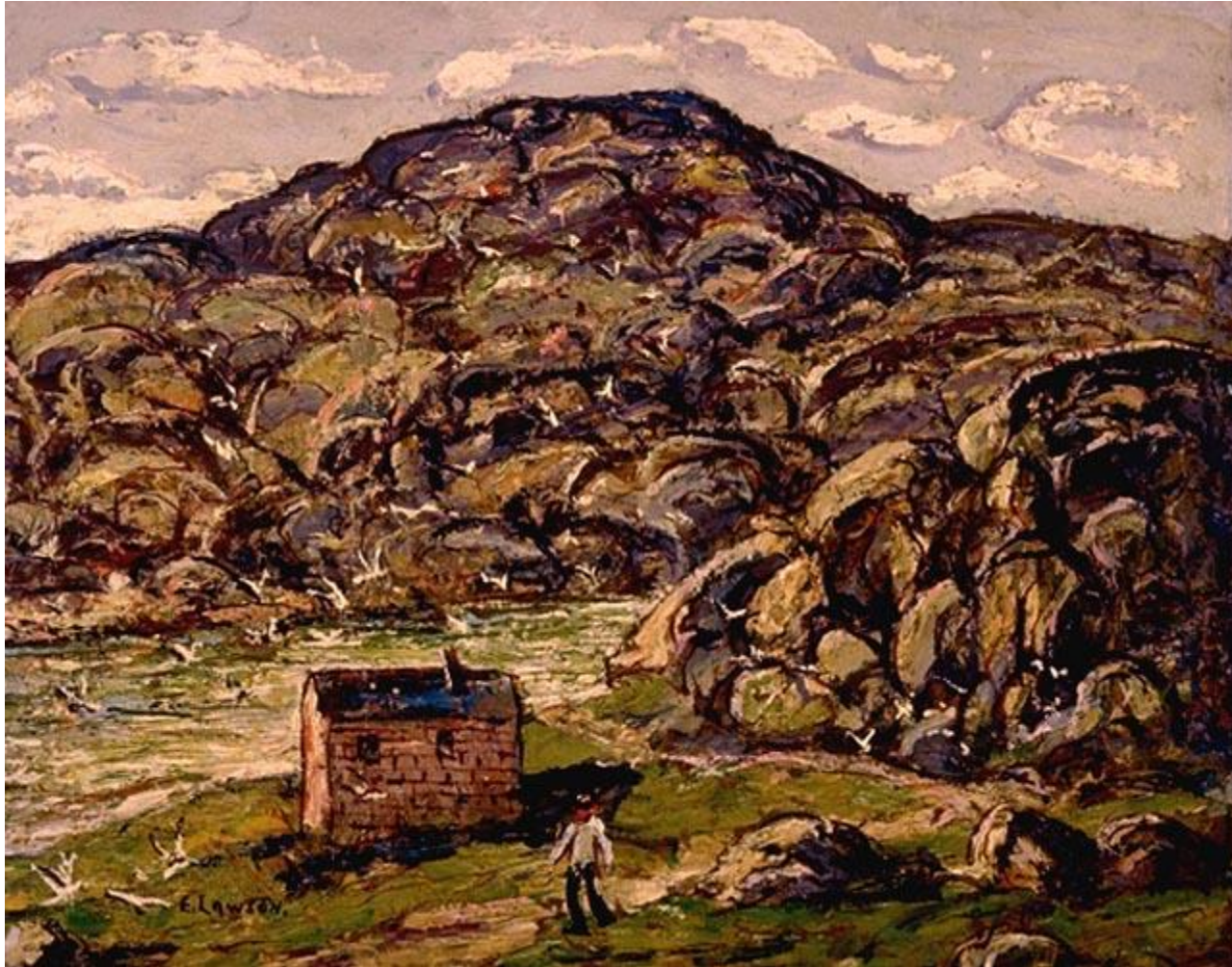
Ernest Lawson was born 22 March 1873 in Halifax, Nova Scotia, and died 18 December 1939 in Miami Beach, Florida. Although he painted primarily in the United States, he painted in Nova Scotia and Newfoundland in 1924. You can read his biography at the Canadian Encyclopedia.¹

Representative Art can be found at the following sites:

- Artefacts Canada: <http://www.rcip-chin.gc.ca/bd-dl/artefacts-eng.jsp?emu=en.artefacts:/ws/human/user/www/SearchForm&searchType=advanced&currLang=English>. Enter the name of the artist in the “who box” and then chose how the results are displayed
- The Athenaeum: <http://www.the-athenaeum.org/art/list.php?m=a&s=tu&aid=1765>
- The Museum Syndicate: <http://www.museumsyndicate.com/artist.php?artist=168>

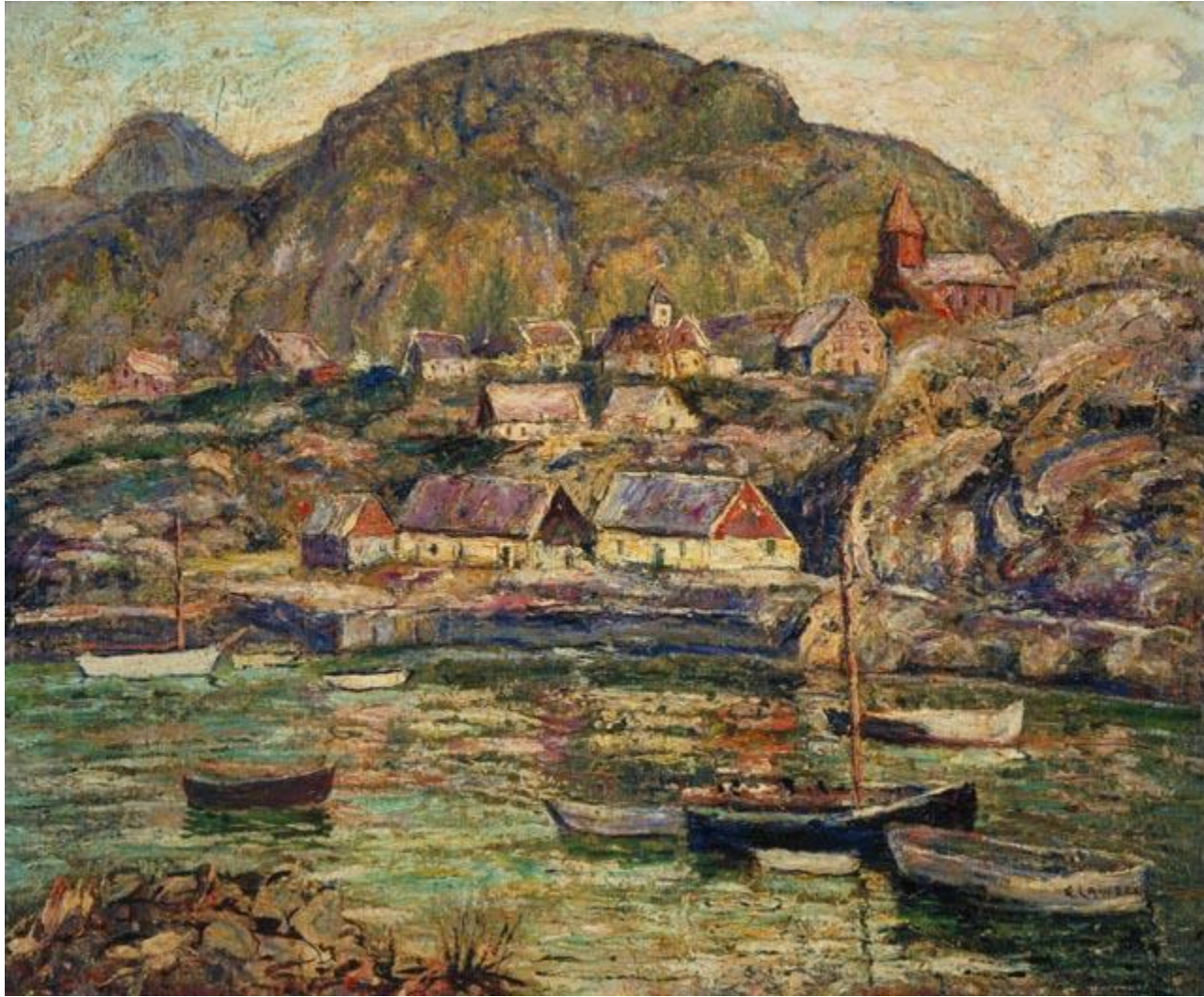
¹ <http://www.thecanadianencyclopedia.com/en/article/ernest-lawson/>

Ernest Lawson
Diane Wolford Sheppard © 2014 – All Rights Reserved



The Inlet, Available from Artefacts Canada

Ernest Lawson
Diane Wolford Sheppard © 2014 – All Rights Reserved



Newfoundland Coast, Available from Artefacts Canada

Ernest Lawson
Diane Wolford Sheppard © 2014 – All Rights Reserved



Snowbound Boats, Available from Artefacts Canada

Ernest Lawson
Diane Wolford Sheppard © 2014 – All Rights Reserved



Winter, Available from Artefacts Canada