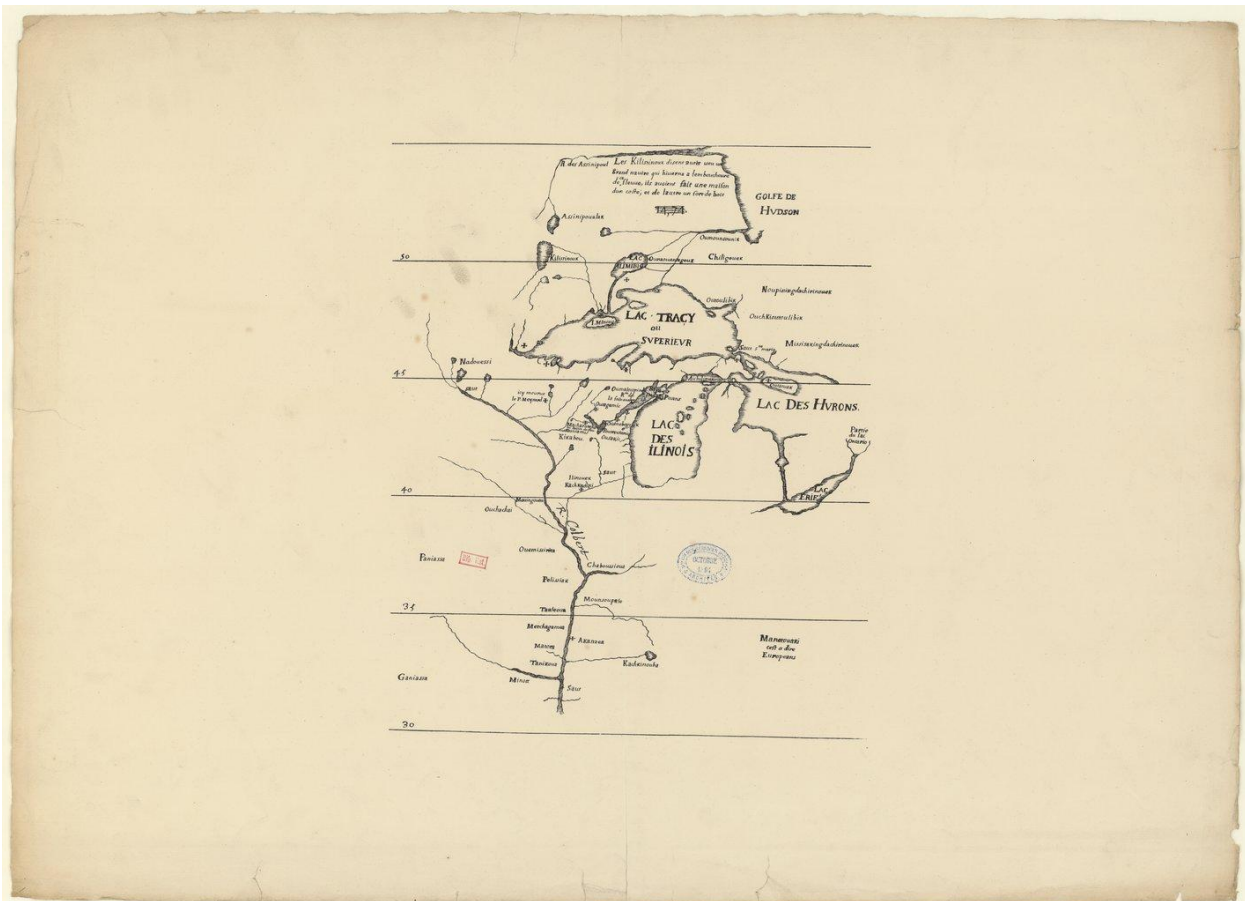


Louis Jolliet
Researched by Diane Wolford Sheppard, FCHSM Member

Louis Jolliet is best known as a co-explorer and co-discoverer of the Mississippi with Jacques Marquette, S.J. However, he was also a cartographer and king's hydrographer. Unfortunately, the original map and log book as well as the copies were lost in a fire (at Sault Ste. Marie) and a canoe accident as he arrived at the St. Louis Rapids (his three companions drowned in the accident).¹ Therefore, for the Great Lake's and the journey with Marquette we only have facsimiles of maps attributed to Jolliet that he presumably drew from memory. If Jolliet drew the maps from memory, that means that he took the route to Michilimackinac or returned to the St. Lawrence settlements through Lakes Ontario, Erie, and Huron, rather than the route via the Ottawa River. Louis' brother Adrien was the first French Canadian documented to have taken that route, but he died on his return voyage to the St. Lawrence settlements. Alternatively, Louis Jolliet could have learned of the route from René Bréhan de Galinée and François Dollier de Casson who travelled to Michilimackinac via Lakes Erie and Huron after they learned of the route from Adrien Jolliet. See the PDF for Galinée which contains a modern facsimile of Galinée's map.²

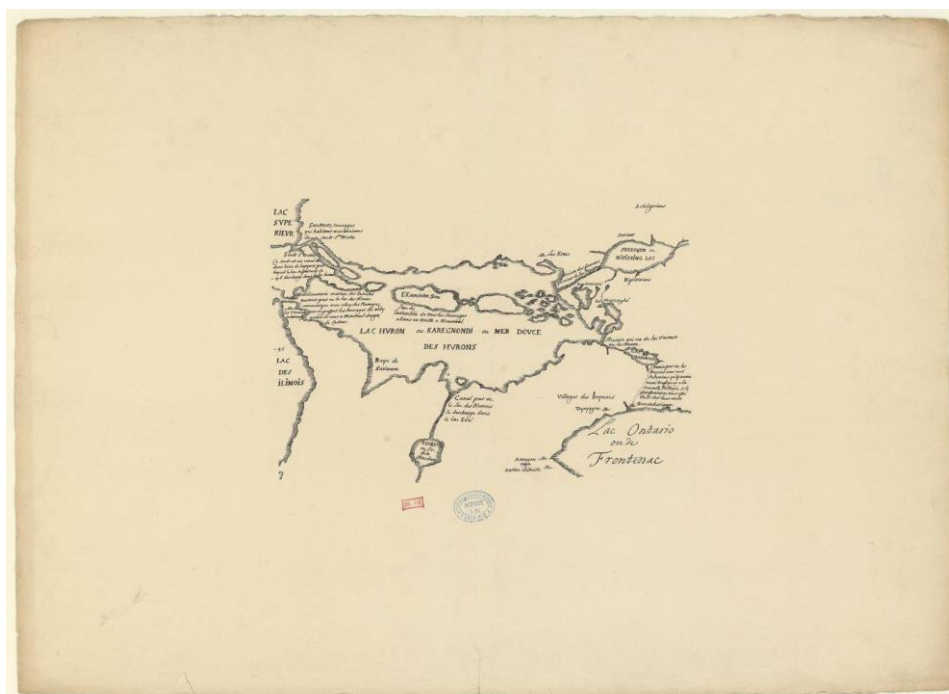


Source gallica.bnf.fr / Bibliothèque nationale de France

Facsimile of a map attributed to Louis Jolliet – [Carte des Lacs Tracy ou supérieur, Lac des Illinois, Lac des Hurons, rivière Colbert] ([Reprod. en fac-sim]) / Louis Jolliet – Available from Gallica:
<http://gallica.bnf.fr/ark:/12148/btv1b53016938t.r=Jolliet%2C+Louis.langEN>

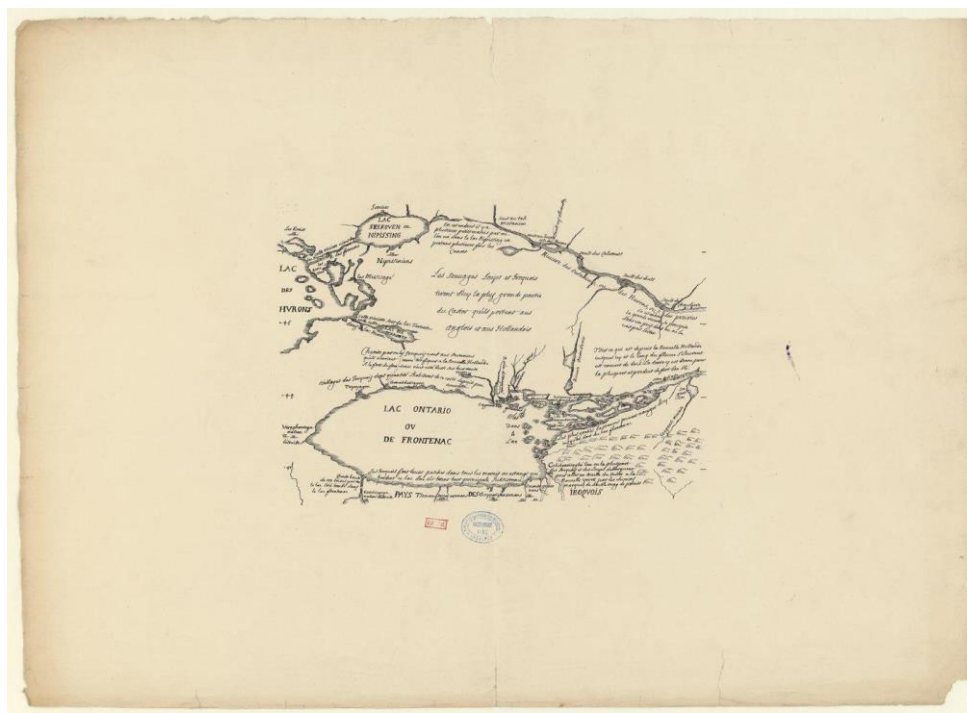
¹ Dictionary of Canadian Biography Online: http://www.biographi.ca/en/bio/jolliet_louis_1E.html

² See Part 5 of the timeline on the FCHSM website on our History of New France page:
http://www.habitanteritage.org/french-canadian_resources/history_of_new_france



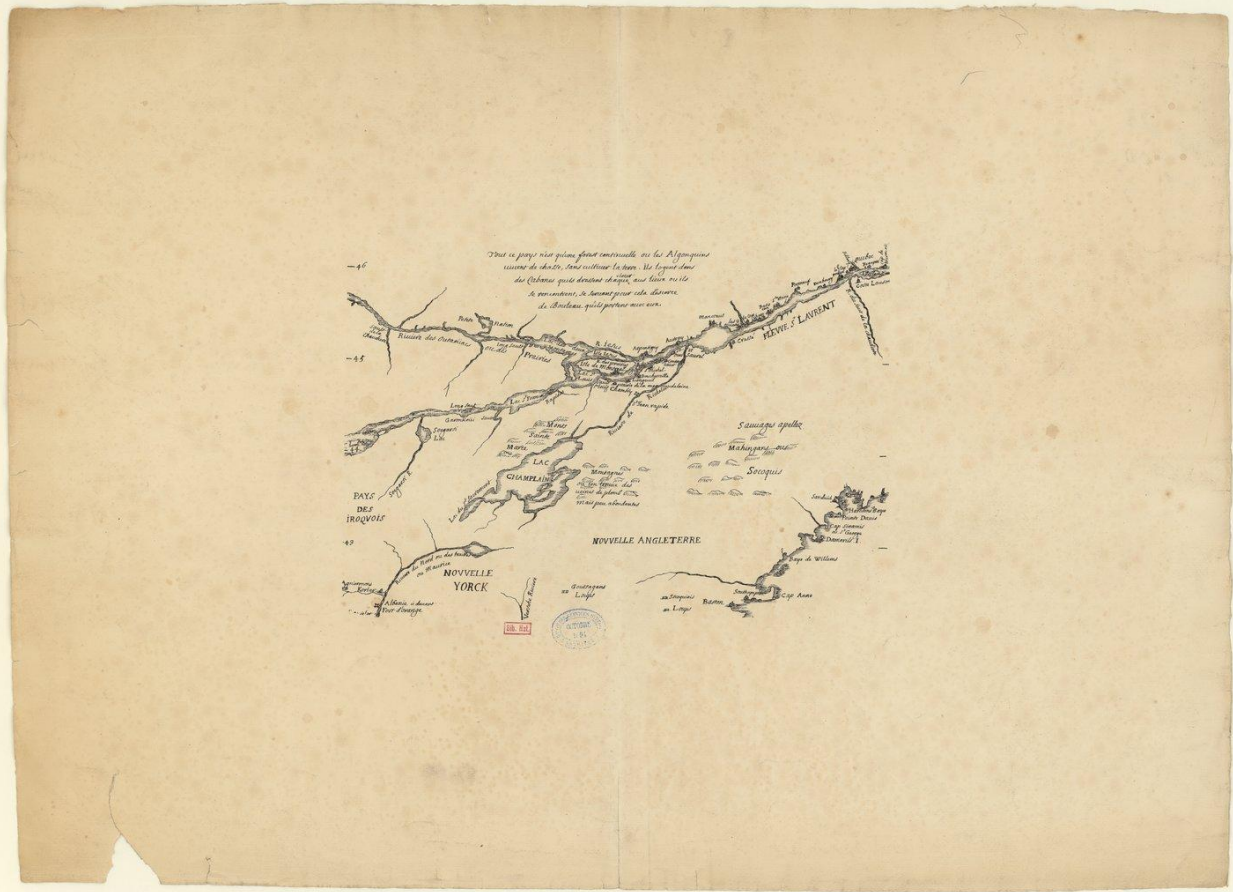
Source gallica.bnf.fr / Bibliothèque nationale de France

Facsimile of a map attributed to Louis Jolliet – [Lac Huron ou Karegnondi ou mer douce des Hurons] ([Reprod. en fac-sim]) – Available from Gallica:
<http://gallica.bnf.fr/ark:/12148/btv1b53016915n.r=Jolliet%2C+Louis.langEN>



Source gallica.bnf.fr / Bibliothèque nationale de France

Facsimile of a map attributed to Louis Jolliet – [Carte du lac Ontario ou de Frontenac] ([Reprod. en fac-sim]) / Louis Jolliet – Available from Gallica:
<http://gallica.bnf.fr/ark:/12148/btv1b53016904s.r=Jolliet%2C+Louis.langEN>



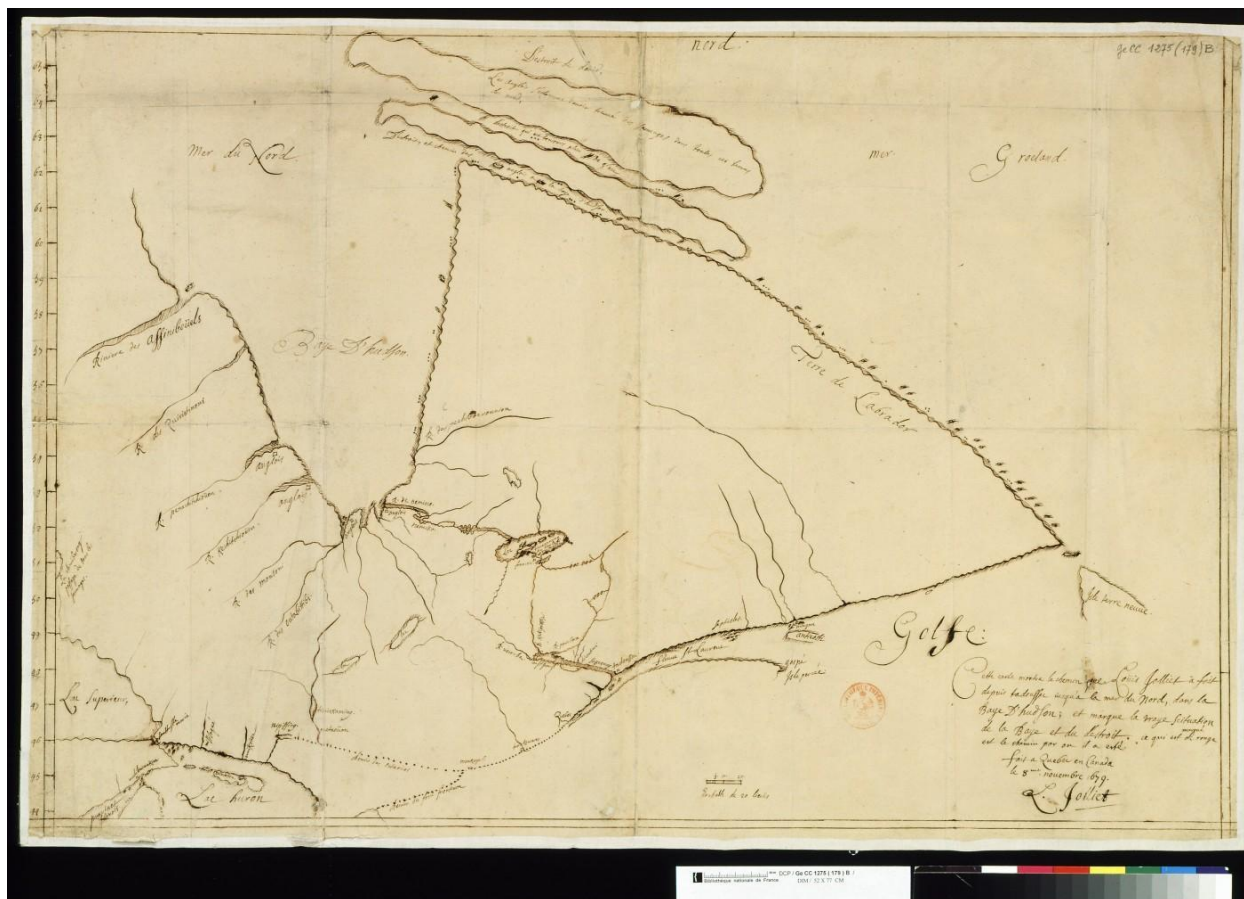
Source gallica.bnf.fr / Bibliothèque nationale de France

Facsimile of a map attributed to Louis Jolliet – [Carte du fleuve Saint-Laurent, Lac Champlain, Nouvelle Angleterre] ([Reprod. en fac-sim]) / Louis Jolliet – Available from Gallica: <http://gallica.bnf.fr/ark:/12148/btv1b53016811g.r=Jolliet%2C+Louis.langEN>



Source gallica.bnf.fr / Bibliothèque nationale de France

Jean Baptiste Louis Franquelin's map of the St. Laurence based on Jolliet – *Carte du grand fleuve St Laurens dressee et dessinee sur les memoires et observations que le Sr. Jolliet a tres exactement faites en barq; et en canot en 46 voyages pendant plusieurs années / Par Jean Baptiste Louis Franquelin 1685* – Available from Gallica: <http://gallica.bnf.fr/ark:/12148/btv1b52501769v.r=Jolliet%2C+Louis.langEN>



Source gallica.bnf.fr / Bibliothèque nationale de France

Louis Jolliet – Cette carte montre le chemin que Louis Jolliet a fait depuis Tadoussac iusqu'à la Mer du Nord, dans la Baie D'hudson, et marque la vraie scituation de la Baie et du destroit; ce qui est marqué de rouge est le chemin par ou il a esté. Fait à Québec en Canada le 8ème novembre 1679. / [Signé:] L.

Jolliet – Available from Gallica:

<http://gallica.bnf.fr/ark:/12148/btv1b7860660t.r=Jolliet%2C+Louis.langEN>